

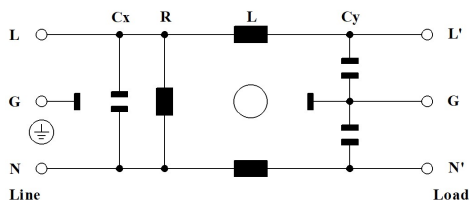
特点 Features

额定电流1-20A	Rated currents from 1 to 20A
常规性能滤波器	General purpose filtering performance
IEC插座式 C14/C20	IEC Inlet C14/C20
高性价比	Cost-effective
医用型滤波器N型	Optional medical versions (N type)

技术参数 Technical specifications

额定电压	Rated voltage	250Vac
额定频率	Operating frequency	50/60Hz
额定电流	Rated current	1-20A@40°C
耐电压	High potential test voltage	
	L→N	1500Vdc /2s
	L/N→PE	1500Vac /2s
气候类别	Temperature range	25/085/21
参考设计标准	UL1283、EN60939、CSA22.2 NO.8	
平均无故障工作时间	MTBF	>2'000'000h

电路图 Typical electrical schematic



额定电流 Rated current [A]

1	2	3	4	5	6	7	8	9	10	20
1A ←-----→ 20A										

性能指标 Performance indicators

普通 standard	较好 high	完美 perfect



安规认证 Approvals

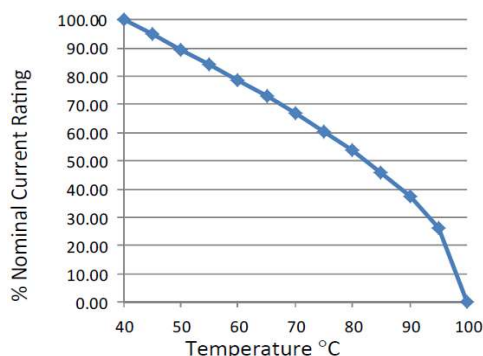


RoHS

典型运用 Typical applications

- 电子设备 Electronic equipment
- 消费类电子 Consumer goods
- 家用电器 Household equipment
- 医疗设备 Medical equipment
- 自动化设备 Office automation equipment
- 通讯设备 Datacom equipment

温度降额曲线 Temperature Derating Curve



滤波器选型表 Filter selection table

型号 Filter model	额定电流 安培 Rated current [A]	泄漏电流 毫安 Leakage current [mA]	接线端子 Terminal	外形尺寸 Mechanical Dimensions	重量 克 weight [g]
JEF2110-1-16	1	0.35	6.3×0.8	fig.1-C14	50
JEF2110-3-16	3	0.35	6.3×0.8	fig.1-C14	50
JEF2110-6-16	6	0.35	6.3×0.8	fig.1-C14	50
JEF2110-10-16	10	0.35	6.3×0.8	fig.1-C14	50
JEF2110-15-16	15	0.35	6.3×0.8	fig.1-C14	50
JEF2110-20-16	20	0.35	6.3×0.8	fig.2-C20	60
JEF2110-1-16N	1	0.0	6.3×0.8	fig.1-C14	50
JEF2110-3-16N	3	0.0	6.3×0.8	fig.1-C14	50
JEF2110-6-16N	6	0.0	6.3×0.8	fig.1-C14	50
JEF2110-10-16N	10	0.0	6.3×0.8	fig.1-C14	50
JEF2110-15-16N	15	0.0	6.3×0.8	fig.1-C14	50
JEF2110-20-16N	20	0.0	6.3×0.8	fig.2-C20	60

接线端子的代码定义: 16-6.3×0.8插片
不同温度下的额定电流见温度降额曲线
工况下的泄露电流 @250Vac 50Hz

Input/Outout connections code:16-6.3×0.8
Operation current under different temperatures see Temperature Derating Curve
Leakage current under operating conditions @250Vac 50Hz

典型插入损耗[dB]-标准系列

Typical filter attenuation[dB]-Standard series

参照CISPR17 50/50Ω测试系统: CM代表共模 DM代表差模		Per CISPR17 50/50Ω test system: CM=asym DM=sym					
频率-MHz	frequency MHz	0.15	0.5	1	5	10	30
1~3Amp							
CM		46	48	43	40	39	49
DM		15	34	40	51	54	61
6~10Amp							
CM		37	44	45	43	41	47
DM		16	23	32	39	46	59
15~20Amp							
CM		18	29	36	42	46	60
DM		9	18	26	35	43	59

外形尺寸 Mechanical data

所有尺寸以mm为单位; 1英寸=25.4mm

All dimensions in mm;1 inch=25.4mm

